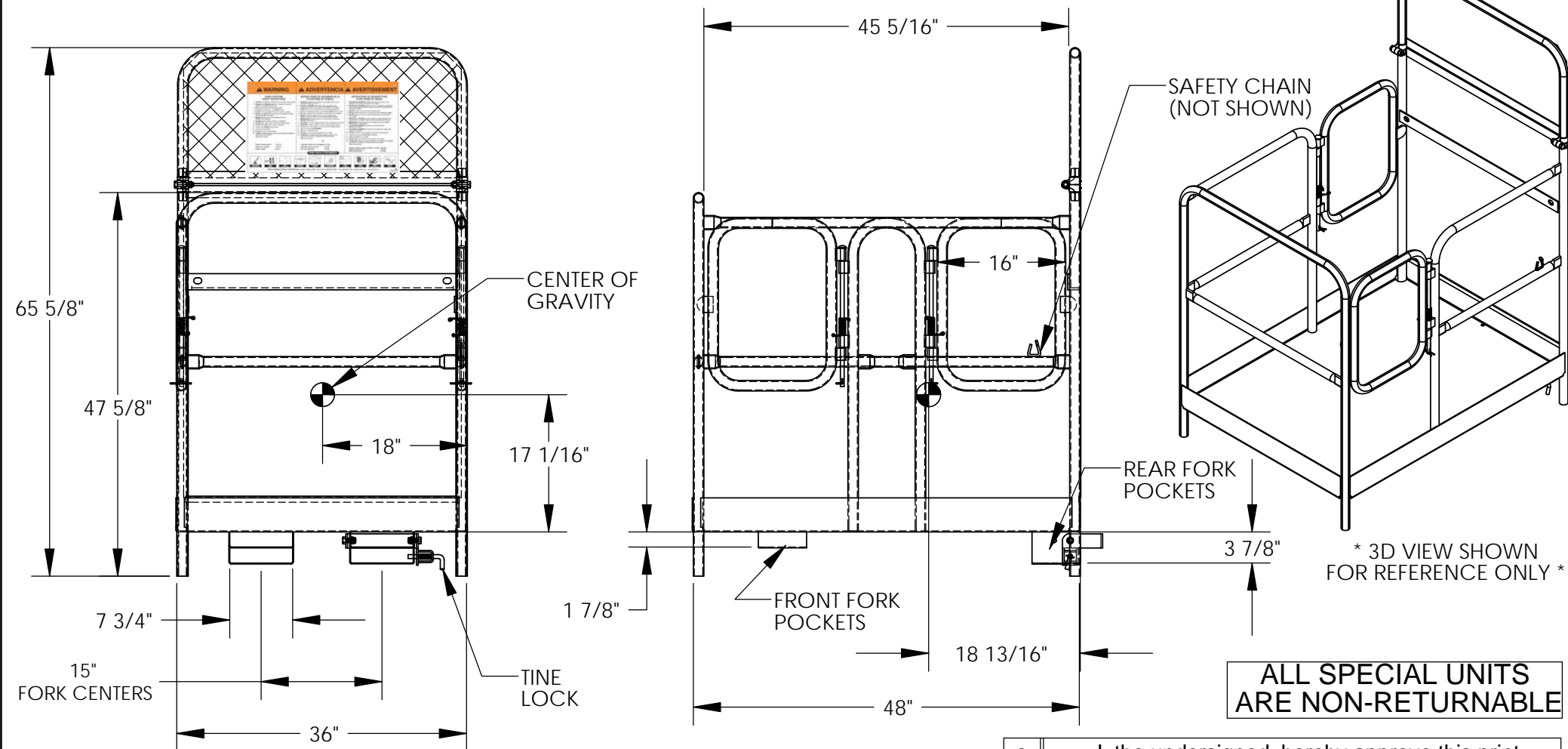


SIDE DUAL DOOR WORK PLATFORM - WP-3648-DD



STANDARD FEATURES

MODEL NUMBER: WP-3648-DD
 CAPACITY IS 1,000 POUNDS (EVENLY DISTRIBUTED LOAD)
 PLATFORM WIDTH: 36"
 PLATFORM LENGTH: 48"
 DOOR WIDTH: 16"
 42" HIGH HANDRAILS WITH 21" MIDRAIL AND 4" TOEBOARD
 60" HIGH EXPANDED MESH BACKING
 7 3/4" x 3 7/8" I.D. USABLE FORK POCKETS IN REAR
 7 3/4" x 1 7/8" I.D. USABLE FORK POCKETS IN FRONT
 SAFETY CHAIN TO SECURE WORK PLATFORM TO FORK TRUCK
 UNIT IS PAINTED BLUE
 MANUFACTURED TO MEET OUR INTERPRETATION OF OSHA
 NEVER EXCEED LOAD CENTER RATING PER FORK TRUCK
 MANUFACTURER'S GUIDLINES.
 DO NOT USE THIS FORK TRUCK ATTACHMENT IF LOAD WILL
 EXCEED FORK TRUCK MANUFACTURER'S LOAD
 CENTER RATING.

SPECIAL FEATURES

NONE

**A
P
P
R
O
V
A
L**

I, the undersigned, hereby approve this print.
 This includes my approval of design & dimensions

[] As drawn [] As marked

Signed: _____ Date: _____

LEAD TIME WILL START UPON RECEIPT
 OF SIGNED APPROVAL DRAWING

DISTRIBUTOR'S NAME: VESTIL MANUFACTURING			P.O.# X
DRAWN BY: KY			W.O.# X
DATE: 8/1/05			SALES: X
REFERENCE: X			FILE NAME: 14-007-075
SCALE: 1:18			
QUOTE # X			