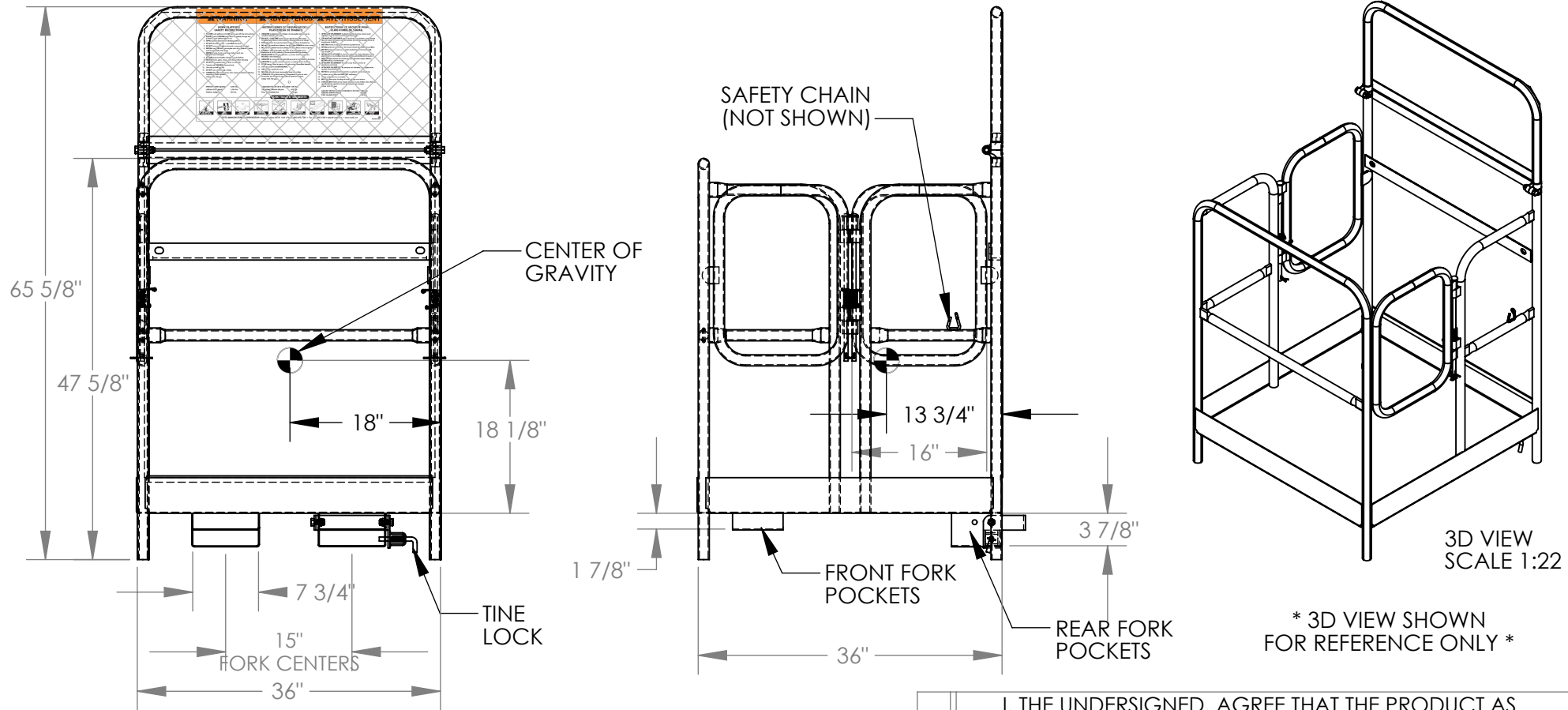


SIDE DUAL DOOR WORK PLATFORM - WP-3636-DD

APPROX WEIGHT: 209.18 lbs.
 DOES NOT INCLUDE WEIGHT OF POWER OR PACKAGING!!!

*** ANY ADDITIONS, DELETIONS, OR OMISSIONS MUST BE CORRECTED ON THIS DRAWING AS THIS DRAWING WILL BE CONSIDERED ALL INCLUSIVE ***

ALL GRAPHICS PROVIDED ARE FOR REFERENCE ONLY. IF CERTAIN DIMENSIONS ARE CRITICAL PLEASE VERIFY THOSE DIMENSIONS WITH YOUR SALESPERSON



STANDARD FEATURES

- MODEL NUMBER: WP-3636-DD
- CAPACITY IS 1,000 POUNDS (EVENLY DISTRIBUTED LOAD)
- PLATFORM WIDTH: 36"
- PLATFORM LENGTH: 36"
- DOOR WIDTH: 16"
- 42" HIGH HANDRAILS WITH 21" MIDRAIL AND 4" TOEBOARD
- 60" HIGH EXPANDED MESH BACKING
- 7 3/4" x 3 7/8" I.D. USABLE FORK POCKETS IN REAR
- 7 3/4" x 1 7/8" I.D. USABLE FORK POCKETS IN FRONT
- SAFETY CHAIN TO SECURE WORK PLATFORM TO FORK TRUCK
- UNIT IS PAINTED BLUE
- MANUFACTURED TO MEET OUR INTERPRETATION OF OSHA
- NEVER EXCEED LOAD CENTER RATING PER FORK TRUCK MANUFACTURER'S GUIDELINES.
- DO NOT USE THIS FORK TRUCK ATTACHMENT IF LOAD WILL EXCEED FORK TRUCK MANUFACTURER'S LOAD CENTER RATING.

SPECIAL FEATURES

NONE

APPROVAL

I, THE UNDERSIGNED, AGREE THAT THE PRODUCT AS REPRESENTED SATISFIES DESIGN AND DIMENSION REQUIREMENTS. I ALSO ACKNOWLEDGE MY DUTY TO CONFIRM PRODUCT AND INSTALLATION COMPLIANCE WITH ALL APPLICABLE FEDERAL, STATE AND LOCAL REGULATIONS AND STANDARDS.

ALL SPECIAL UNITS ARE NON-RETURNABLE

[] As drawn [] As marked

Signed: _____ Date: _____

LEAD TIME WILL START UPON RECEIPT OF SIGNED APPROVAL DRAWING

DISTRIBUTOR'S NAME:		P.O.#
VESTIL MANUFACTURING		X
DRAWN BY: K. YOUNG		DATE: 7/29/05
REFERENCE: X		SCALE: 1:18
QUOTED LEAD TIME: X		QUOTE # X
		SALES: X
		FILE NAME: 14-007-074