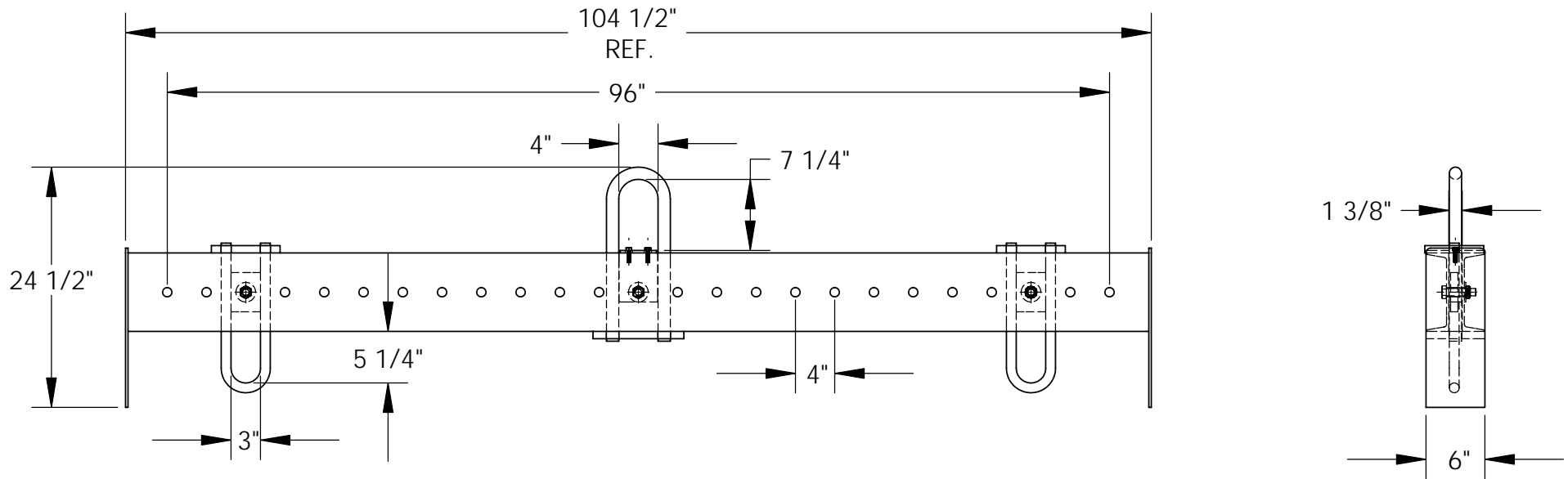


# ADJUSTABLE SPREADER BEAM - SBM-80



## STANDARD FEATURES

MODEL NUMBER: SBM-80  
 CAPACITY: 8,000 LBS  
 OVERALL LENGTH: 104 1/2"  
 OVERALL HEIGHT: 24 1/2"  
 OVERALL WIDTH: 6"  
 USABLE UPPER BAIL: 4" W x 7 1/4" HT  
 USABLE LOWER BAIL: 3" W x 5 1/4" HT  
 MINIMUM SPREAD: 8 INCHES  
 MAXIMUM SPREAD: 96 INCHES (8 FEET)

## SPECIAL FEATURES

NONE

LEAD TIME WILL START UPON  
 RECEIPT OF SIGNED APPROVAL  
 DRAWING

## APPROVAL

I, the undersigned, hereby approve this print

[ ] As drawn [ ] As marked

This includes my approval of design & dimensions

Signed: \_\_\_\_\_

Date: \_\_\_\_\_

DISTRIBUTOR'S NAME:		P.O.#
VESTIL MANUFACTURING		X
DRAWN BY:	DATE:	W.O.#
KY	5/18/05	X
REFERENCE:		SALES:
XXXX		XXX
		FILE NAME:
		08-007-045