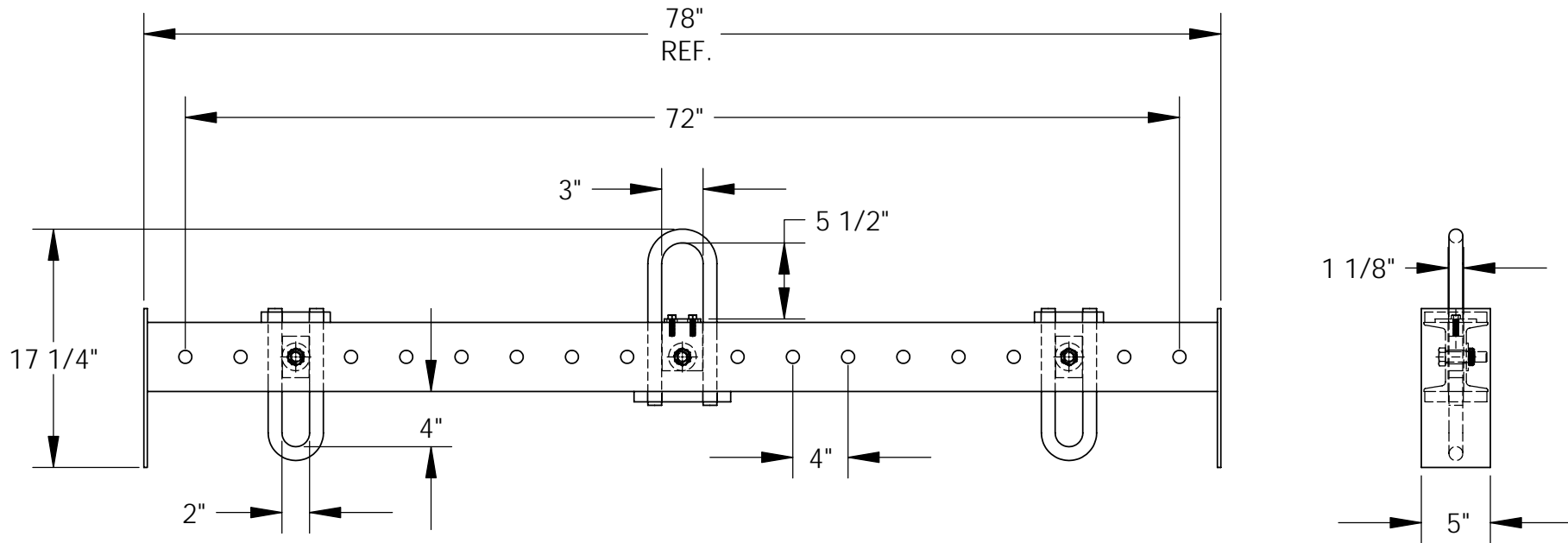


ADJUSTABLE SPREADER BEAM - SBM-40



STANDARD FEATURES

MODEL NUMBER: SBM-40
 CAPACITY: 4,000 LBS
 OVERALL LENGTH: 78"
 OVERALL HEIGHT: 17 1/4"
 OVERALL WIDTH: 5"
 USABLE UPPER BAIL: 3" W x 5 1/2" HT
 USABLE LOWER BAIL: 2" W x 4" HT
 MINIMUM SPREAD: 8 INCHES
 MAXIMUM SPREAD: 72 INCHES (6 FEET)

SPECIAL FEATURES

NONE

LEAD TIME WILL START UPON
 RECEIPT OF SIGNED APPROVAL
 DRAWING

APPROVAL

I, the undersigned, hereby approve this print

☐ As drawn ☐ As marked

This includes my approval of design & dimensions

Signed: _____

Date: _____

DISTRIBUTOR'S NAME:		P.O.#
VESTIL MANUFACTURING		X
DRAWN BY:	DATE:	W.O.#
KY	5/17/05	X
REFERENCE:		SALES:
XXXX		XXX
		FILE NAME:
		08-007-044