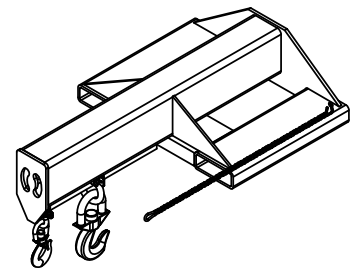
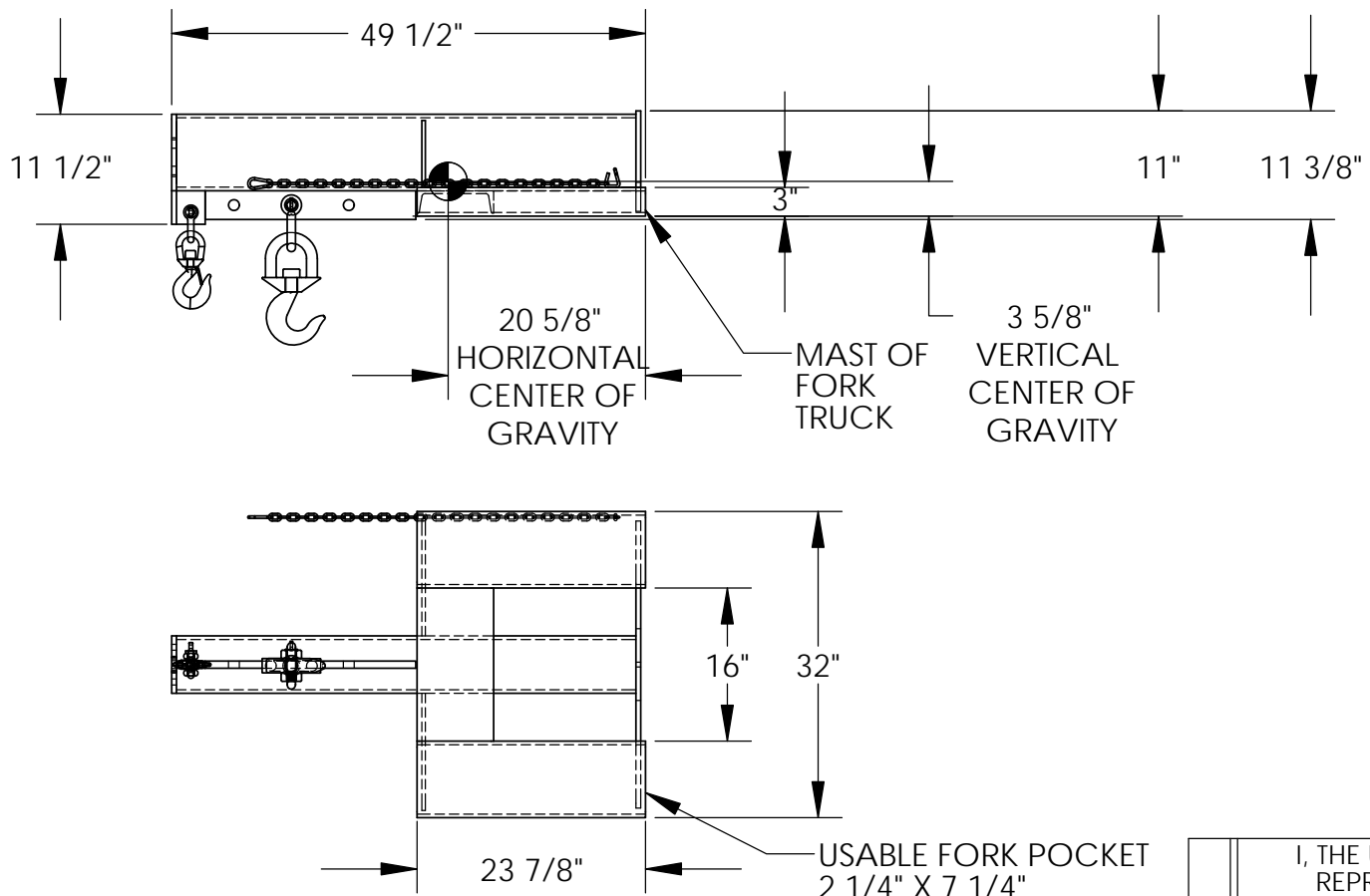


APPROX WEIGHT: 430.01 lbs.  
DOES NOT INCLUDE WEIGHT OF POWER OR PACKAGING!!!

# NON-TELESCOPING ECONOMY BOOM - LMS-EBNT-40-8

\*\*\* ANY ADDITIONS, DELETIONS, OR OMISSIONS MUST BE CORRECTED ON THIS DRAWING AS THIS DRAWING WILL BE CONSIDERED ALL INCLUSIVE \*\*\*  
ALL GRAPHICS PROVIDED ARE FOR REFERENCE ONLY. IF CERTAIN DIMENSIONS ARE CRITICAL PLEASE VERIFY THOSE DIMENSIONS WITH YOUR SALESPERSON



\*3D VIEW SHOWN FOR REFERENCE ONLY\*

DIMENSION TOLERANCE ± 1/4"

APPROVAL

I, THE UNDERSIGNED, AGREE THAT THE PRODUCT AS REPRESENTED SATISFIES DESIGN AND DIMENSION REQUIREMENTS. I ALSO ACKNOWLEDGE MY DUTY TO CONFIRM PRODUCT AND INSTALLATION COMPLIANCE WITH ALL APPLICABLE FEDERAL, STATE AND LOCAL REGULATIONS AND STANDARDS.  
**ALL SPECIAL UNITS ARE NON-RETURNABLE**  
[ ] As drawn [ ] As marked

Signed: \_\_\_\_\_ Date: \_\_\_\_\_

LEAD TIME WILL START UPON RECEIPT OF SIGNED APPROVAL DRAWING

DISTRIBUTOR'S NAME:		P.O.#
VESTIL MANUFACTURING		X
W.O.#		X
DRAWN BY:	Q. WESTFALL	DATE: 05/28/09
REFERENCE:	X	SCALE: 1:20
QUOTED LEAD TIME:	X	QUOTE # X
FILE NAME:		08-007-215

## STANDARD FEATURES

- MODEL NUMBER IS LMS-EBNT-40-8
- CAPACITY IS 8,000 LBS.
- LOST LOAD IS 440 LBS
- OVERALL WIDTH IS 32"
- FORK POCKET CENTERS IS 24"
- OVERALL LENGTH IS 49 1/2"
- OVERALL HEIGHT IS 11 1/2"
- USABLE FORK POCKET IS 2 1/4" X 7 1/4"
- 31" MINIMUM HOOK POINT
- 47 1/2" MAXIMUM HOOK POINT
- EFFECTIVE THICKNESS IS LESS THAN 1"

## \*\*MAXIMUM SINGLE HOOK CAPACITIES

DISTANCE	36"	48"
CAPACITY	8000	6650

## SPECIAL FEATURES

NONE

NEVER EXCEED LOAD CENTER RATING PER FORK TRUCK MANUFACTURER'S GUIDELINES. DO NOT USE THIS FORK TRUCK ATTACHMENT IF LOAD WILL EXCEED FORK TRUCK MANUFACTURER'S LOAD CENTER RATING.