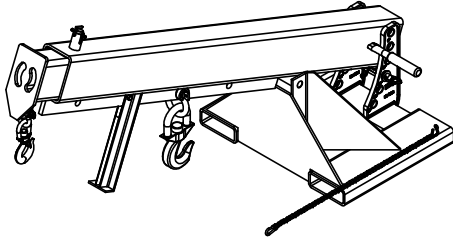
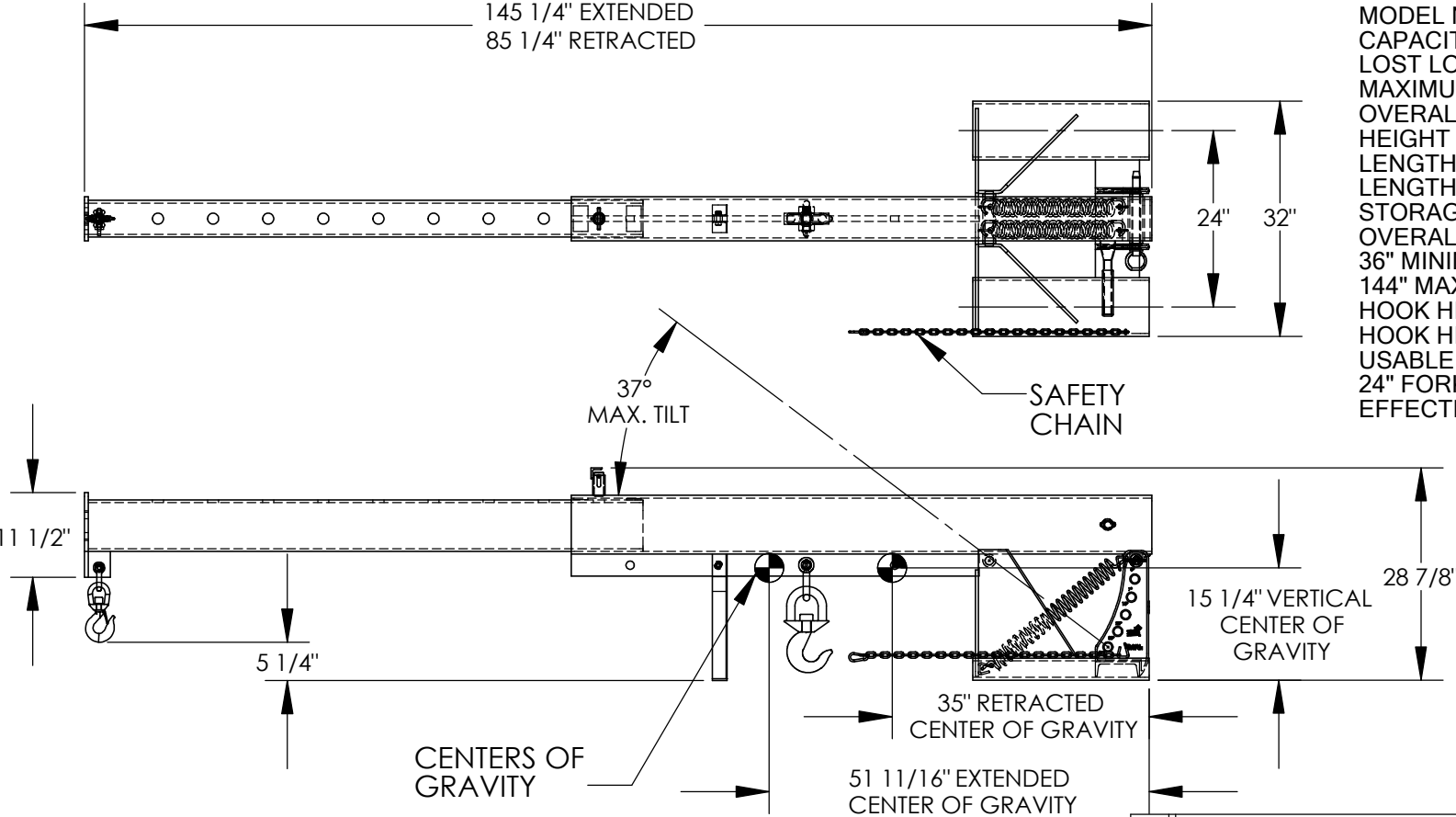


ORBIT TELESCOPING BOOM - LM-OBT-8-24

APPROX WEIGHT: 665.09 lbs.  
DOES NOT INCLUDE WEIGHT OF POWER OR PACKAGING!!!

STANDARD FEATURES

MODEL NUMBER: LM-OBT-8-24  
CAPACITY: 8,000 LBS  
LOST LOAD - 675 LBS  
MAXIMUM TILTING ANGLE: 37°  
OVERALL HEIGHT - 28 7/8"  
HEIGHT (MAX. TILTED) - 96 1/8"  
LENGTH (EXTENDED) - 145 1/4"  
LENGTH (RETRACTED) - 85 1/4"  
STORAGE LENGTH (RETRACTED) - 82 1/2"  
OVERALL WIDTH - 32"  
36" MINIMUM HOOK POINT  
144" MAXIMUM HOOK POINT  
HOOK HEIGHT - 5 1/4"  
HOOK HEIGHT (MAX. TILTED) - 76 9/16"  
USABLE FORK POCKET - 2 1/4 x 7 1/4  
24" FORK POCKET CENTERS  
EFFECTIVE THICKNESS: LESS THAN 1"



\* 3D ROTATED VIEW FOR REFERENCE \*

ALL GRAPHICS PROVIDED ARE FOR REFERENCE ONLY. IF CERTAIN DIMENSIONS ARE CRITICAL PLEASE VERIFY THOSE DIMENSIONS WITH YOUR SALESPERSON

\*--MAXIMUM SINGLE HOOK CAPACITIES

DISTANCE	36"	48"	60"	72"	84"	96"	108"	120"	132"	144"
CAPACITY	8000	6650	6000	5300	4650	4000	3500	3000	2600	2200

NEVER EXCEED LOAD CENTER RATING PER FORK TRUCK MANUFACTURER'S GUIDELINES.  
DO NOT USE THIS FORK TRUCK ATTACHEMENT IF LOAD WILL EXCEED FORK TRUCK MANUFACTURER'S LOAD CENTER RATING.

SPECIAL FEATURES

NONE

APPROVAL

I, THE UNDERSIGNED, AGREE THAT THE PRODUCT AS REPRESENTED SATISFIES DESIGN AND DIMENSION REQUIREMENTS. I ALSO ACKNOWLEDGE MY DUTY TO CONFIRM PRODUCT AND INSTALLATION COMPLIANCE WITH ALL APPLICABLE FEDERAL, STATE AND LOCAL REGULATIONS AND STANDARDS.  
**ALL SPECIAL UNITS ARE NON-RETURNABLE**  
[ ] As drawn [ ] As marked

Signed: \_\_\_\_\_ Date: \_\_\_\_\_

LEAD TIME WILL START UPON RECEIPT OF SIGNED APPROVAL DRAWING

DISTRIBUTOR'S NAME:		P.O.#
VESTIL MANUFACTURING		X
DRAWN BY: ND		W.O.#
DATE: 7/2/07		X
REFERENCE: X	SCALE: 1:24	SALES: X
QUOTED LEAD TIME: X	QUOTE # X	FILE NAME:
		08-007-131