



# IBH 2018

## In-Between Handling Manual Stacker

Fits situations where a lift truck is necessary but power travel is not. Excellent work table in a production line and loading and unloading tight warehouse applications.

### CAPACITY

2000 lbs @ 18" Load Center

### BATTERY

12V 125 AH Polycase battery

### CHARGER

Built-in 8 amp 110 VAC plug

### WEIGHT

540 lbs to 650 lbs with battery

### WHEELS

CASTER

6" x 3" steel

LOAD

4" x 2" steel

### HIGH STRENGTH CONSTRUCTION

High grade steel mast construction features interlocked channel and I-beam design with roller bearing surfaces. Mast and carriage is of fully rollered construction for smooth, long-wearing performance.

This type of construction accommodates high lifting stresses and maintains load stability. Rigid steel chassis with continuous seam-welded seams for distortion-free use.

### HYDRAULICS

Infinitely variable lowering ball type valve provides full range operator control and no-drift check in neutral. Gear pump sized to lift requirements to provide peak performance at modest power draw Full system filtration provided on the intake side of the pump. Prevents foreign matter from entering system. Pressure compensating flow control valve at base of telescopic models regulates lower speed. Chrome plated lift cylinder provides smooth lift/lower operation and long life.

### ELECTRICAL SYSTEM

Lift motor is specially selected for peak efficiency at torque and RPM lift pump requirements. All cables and wiring are color-coded and/or numbered for easy servicing.



IBH 2018-R6 SHOWN WITH RIGID FORK CARRIAGE

### SAFETY EQUIPMENT

Dual adjustable and slip-resistant floor locks for secure positive grip. Built-In relief valve protects system from overload. Also, screen mast guard, dual lifting chains and key lock to prevent unauthorized use.

### ACCESSIBILITY

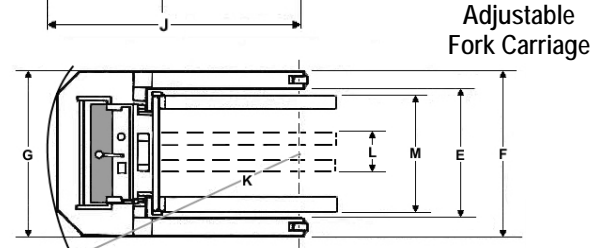
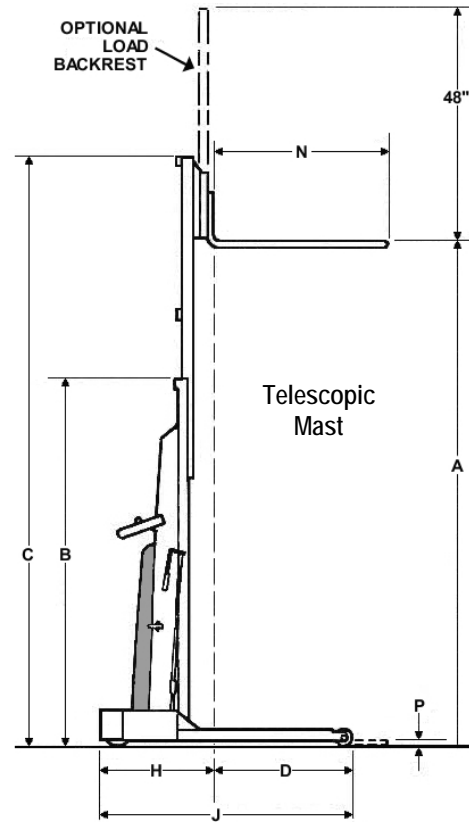
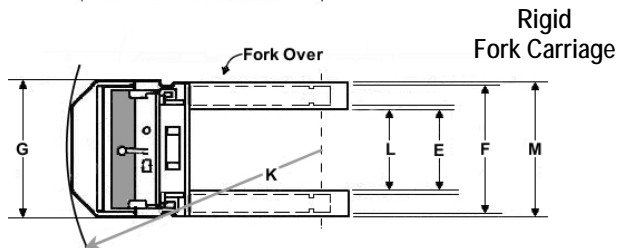
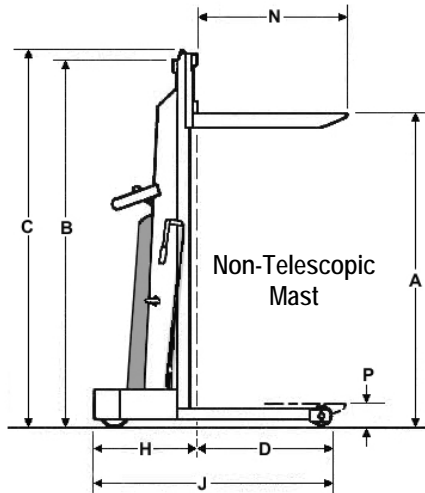
One piece door cover exposes major components for inspection and maintenance. Built 110 VAC charger cord and battery.

### OPTIONAL EQUIPMENT

- Phenolic Load /Caster Wheels
- Handheld - Remote Lift & Lower
- Removable Load Platform
- Roller Bed / Die Puller
- Drum/Paper Roll Handler
- 5th Wheel - Steer Wheel
- Capacities up to 2500 lbs.



IBH 2018-T8 SHOWN WITH ADJUSTABLE FORK CARRIAGE AND SHAFT STYLE FORKS



Model	Lift Height	Col. Height	Ext. Height	Straddle Standard			Chassis			Turn Radius	Forks Standard				Ship Weight
	A	B	C	Long	ID	OD	Width	Length	Overall		ID	OD	Length	Lowered	
	A	B	C	D	E	F	G	H	J	K	L	M	N	P	

### 2000 lbs. Capacity @ 18" Load Center / Rigid Fork Carriage, Non-Telescopic Mast

IBH 2018-R5	60	71.5	73.5	23.3	16.5	24.5	26.4	20.5	45.7	45.7	15.3	26	26.25	4.5	635
IBH 2018-R6	72	83.5	85.5	23.3	16.5	24.5	26.4	20.5	45.7	45.7	15.3	26	26.25	4.5	675
IBH 2018-R7	84	95.5	97.5	23.3	16.5	24.5	26.4	20.5	45.7	45.7	15.3	26	26.25	4.5	715

### 2000 lbs. Capacity @ 18" Load Center / Adjustable Fork Carriage, Non-Telescopic Mast

IBH 2018-A5	57	71.5	47	24.2	26	34	33.4	22.7	46.7	45.7	6	24	30	1.25	665
IBH 2018-A6	69	83.5	86	24.2	26	34	33.4	22.7	46.7	45.7	6	24	30	1.25	705
IBH 2018-A7	81	95.5	98	24.2	26	34	33.4	22.7	46.7	45.7	6	24	30	1.25	745

### 1500 lbs. Capacity @ 18" Load Center / Adjustable Fork Carriage, Telescopic Mast

IBH 2018-T8	96	69	116	23.9	30	38	37.3	22.8	46.7	47.25	9.75	28	30	1.75	875
IBH 2018-T9	108	75	128	23.9	30	38	37.3	22.8	46.7	47.25	9.75	28	30	1.75	915
IBH 2018-T10	120	81	140	23.9	42	50	37.3	22.8	46.7	49.5	9.75	28	30	1.75	965
IBH 2018-T11	132	87	152	23.9	42	50	49.4	22.8	46.7	49.5	9.75	28	30	1.75	1005
IBH 2018-T12	144	93	164	23.9	42	50	49.4	22.8	46.7	49.5	9.75	28	30	1.75	1045