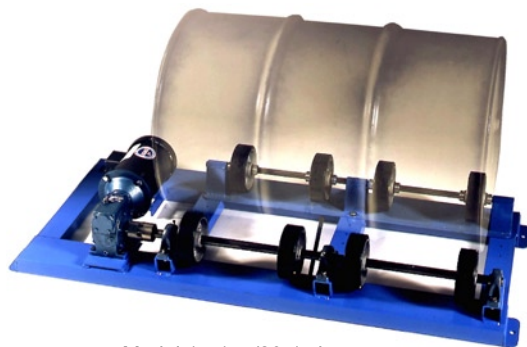


Single Drum Rollers

[Click Here to Watch the Video](#)

- Save time, labor and money
- Blend ingredients right inside your sealed drum
- Eliminate transfer, clean-up, special vessels and apparatus
- Ensure Homogeneity
- Capacity:
 - Liquid load: 1,000 Lb. (455 kg)
 - Dry load varies: 400 Lb. (182 kg) at 10 RPM
 - 300 Lb. (136 kg) at 20 RPM
 - 250 Lb. (114 kg) at 30 RPM



Model 1-5154/20-1 shown rolls a drum at 20 RPM

Fixed Speed Drum Rollers

Designed to rotate one drum at factory fixed drum speed of 10, 20, or 30 RPM, based on 22.5" (57 cm) diameter drum.

Variable Speed Drum Rollers

Rotate one drum at any speed from 1 to 40 RPM. Find the best speed for each material. Some use high speed for initial mixing and low speed for prolonged agitation. Variable speed drum rollers are ideal for experimental use or where there is a variety of materials to be handled.



ROTATE VARIOUS DRUM SIZES: A simple three-bolt attachment feature enables the user to relocate the idler wheel shaft assembly to adjust for various drum diameters. Set screws at each wheel permit easy repositioning to support various length drums.

GROUNDING STRAP: Spring steel grounding straps are standard to help drain possible static charge from drum.

The powerful 1/2 HP motor drives an efficient worm gear reducer connected to a solid 1" (2.54 cm) diameter shaft to turn four 6" (15.2 cm) diameter neoprene drive wheels. The four idler wheels turn freely on roller bearings. Drum rolling speed of 20 RPM is good for most liquids and is often used for paint, etc. Customer may choose factory set drum rotation speed of 10, 20 or 30 RPM.

Handle: Steel drum 6" to 28" (15 to 71 cm) diameter and up to 40" (102 cm) long.

Motor: 1/2 HP

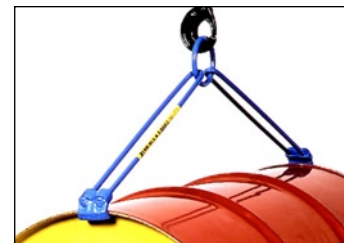
Base Dimensions: 24" x 55" (61 x 140 cm)

Ship dimensions: L 63" W 40" H 20" (160 x 102 x 51 cm)

Export ship dimensions: L 66" W 31" H 24" (168 x 79 x 61 cm)

Recommended Loading Methods

Efficiently load drum rollers with overhead lifting equipment and Morse model 41 Drum Lifting Hook (shown right), or model 42 Drum Lifter.



An Omni-Lift Drum Racker may also be used to place a steel drum onto your single drum roller (bottom right).



MOTOR SELECTION: The basic motor is a three phase, 230/460V, 60Hz, TEFC motor. Other motor voltages, phases, enclosure types, etc. (for example: Explosion-Proof) or air motors are available. Motor controls are not included with the basic machines. Standard Stationary Drum Rotators are shipped without control, cord and plug and must be installed by an electrician according to local codes and customer's preference.

Explosion-Proof motors are rated for Class I Group D, and Class II Groups F and G.

Air motors are vane-type and require correctly sized filter, regulator, lubricator, valve (FRL) and piping supplied by customer. Air Motor Technical Information

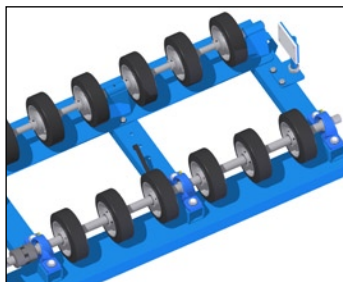
Filter, regulator and lubricator (FRL) may be ordered from Morse.

- Part # 90010-P Description: KIT, 1/4" FRL & VALVE

Options

ROLL PLASTIC DRUMS:

Roll a 55-gallon (208 liter) plastic drum on a stationary drum roller with option POLY-1-5154. It provides extra wheels to support the flexible soft sides of your 55-gallon plastic drum, and an end stop to prevent it from traveling lengthways while being rolled, because plastic drums lack rigid ribs or roll rings.



ROLL A 5-GALLON PAIL:

Optional Idler Attachment part # 1-5-1 facilitates rolling 1 to 5 gallon size (3.8 to 18.9 liters) cylindrical cans or pails. It is easily removed to return to rolling drums.



MADE
IN
USA

Drum Roller Model #	Roll	Motor	RPM *	Capacity Per Drum		Drum Diameter	Max. Drum Length	Ship Weight
				Liquid	Dry **			
1-5154/10-1	1 Drum	1/2 HP, 1-Phase, 115/230V, 60Hz	10	1000 Lb. (455 kg)	400 Lb. (182 kg)	6" to 28" (15 to 71 cm)	40" (102 cm)	296 Lb. (135 kg)
1-5154/10-1-50	1 Drum	1/2 HP, 1-Phase, 110/220V, 50Hz	8	1000 Lb. (455 kg)	400 Lb. (182 kg)	6" to 28" (15 to 71 cm)	40" (102 cm)	296 Lb. (135 kg)
1-5154/10-3	1 Drum	1/2 HP, 3-Phase, 230/460V, 60Hz	10	1000 Lb. (455 kg)	400 Lb. (182 kg)	6" to 28" (15 to 71 cm)	40" (102 cm)	296 Lb. (135 kg)
1-5154/10-3-50	1 Drum	1/2 HP, 3-Phase, 220/380/440V, 50Hz	8	1000 Lb. (455 kg)	400 Lb. (182 kg)	6" to 28" (15 to 71 cm)	40" (102 cm)	296 Lb. (135 kg)
1-5154/10-575	1 Drum	1/2 HP, 3-Phase, 56C, 575V, 60Hz	10	1000 Lb. (455 kg)	400 Lb. (182 kg)	6" to 28" (15 to 71 cm)	40" (102 cm)	296 Lb. (135 kg)
1-5154/10-E1	1 Drum	1/2 HP, Explosion-Proof, 1-Phase, 115/208-230V, 60Hz	10	1000 Lb. (455 kg)	400 Lb. (182 kg)	6" to 28" (15 to 71 cm)	40" (102 cm)	265 Lb. (120 kg)
1-5154/10-E1-50	1 Drum	1/2 HP, Explosion-Proof, 1-Phase, 110/220V, 50Hz	8	1000 Lb. (455 kg)	400 Lb. (182 kg)	6" to 28" (15 to 71 cm)	40" (102 cm)	265 Lb. (120 kg)
1-5154/10-E3	1 Drum	1/2 HP, Explosion-Proof, 3-Phase, 208-230/460V, 60Hz	10	1000 Lb. (455 kg)	400 Lb. (182 kg)	6" to 28" (15 to 71 cm)	40" (102 cm)	265 Lb. (120 kg)
1-5154/10-E3-50	1 Drum	1/2 HP, Explosion-Proof, 3-Phase, 220/380/440V, 50Hz	8	1000 Lb. (455 kg)	400 Lb. (182 kg)	6" to 28" (15 to 71 cm)	40" (102 cm)	265 Lb. (120 kg)
1-5154/10-E575	1 Drum	1/2 HP, Explosion-Proof, 3-Phase, 56C, 575V, 60Hz	10	1000 Lb. (455 kg)	400 Lb. (182 kg)	6" to 28" (15 to 71 cm)	40" (102 cm)	265 Lb. (120 kg)
1-5154/10-A	1 Drum	Air Motor	10	1000 Lb. (455 kg)	400 Lb. (182 kg)	6" to 28" (15 to 71 cm)	40" (102 cm)	252 Lb. (115 kg)
1-5154/20-1	1 Drum	1/2 HP, 1-Phase, 115/230V, 60Hz	20	1000 Lb. (455 kg)	300 Lb. (136 kg)	6" to 28" (15 to 71 cm)	40" (102 cm)	296 Lb. (135 kg)
1-5154/20-1-50	1 Drum	1/2 HP, 1-Phase, 110/220V, 50Hz	16	1000 Lb. (455 kg)	300 Lb. (136 kg)	6" to 28" (15 to 71 cm)	40" (102 cm)	296 Lb. (135 kg)
1-5154/20-3	1 Drum	1/2 HP, 3-Phase, 230/460V, 60Hz	20	1000 Lb. (455 kg)	300 Lb. (136 kg)	6" to 28" (15 to 71 cm)	40" (102 cm)	296 Lb. (135 kg)
1-5154/20-3-50	1 Drum	1/2 HP, 3-Phase, 220/380/440V, 50Hz	16	1000 Lb. (455 kg)	300 Lb. (136 kg)	6" to 28" (15 to 71 cm)	40" (102 cm)	296 Lb. (135 kg)
1-5154/20-575	1 Drum	1/2 HP, 3-Phase, 56C, 575V, 60Hz	20	1000 Lb. (455 kg)	300 Lb. (136 kg)	6" to 28" (15 to 71 cm)	40" (102 cm)	296 Lb. (135 kg)
1-5154/20-E1	1 Drum	1/2 HP, Explosion-Proof, 1-Phase, 115/208-230V, 60Hz	20	1000 Lb. (455 kg)	300 Lb. (136 kg)	6" to 28" (15 to 71 cm)	40" (102 cm)	265 Lb. (120 kg)
1-5154/20-E1-50	1 Drum	1/2 HP, Explosion-Proof, 1-Phase, 110/220V, 50Hz	16	1000 Lb. (455 kg)	300 Lb. (136 kg)	6" to 28" (15 to 71 cm)	40" (102 cm)	265 Lb. (120 kg)
1-5154/20-E3	1 Drum	1/2 HP, Explosion-Proof, 3-Phase, 208-230/460V, 60Hz	20	1000 Lb. (455 kg)	300 Lb. (136 kg)	6" to 28" (15 to 71 cm)	40" (102 cm)	265 Lb. (120 kg)
1-5154/20-E3-50	1 Drum	1/2 HP, Explosion-Proof, 220/380/440V, 3-Phase 50Hz	16	1000 Lb. (455 kg)	300 Lb. (136 kg)	6" to 28" (15 to 71 cm)	40" (102 cm)	265 Lb. (120 kg)
1-5154/20-E575	1 Drum	1/2 HP, Explosion-Proof, 3-Phase, 56C, 575V, 60Hz	20	1000 Lb. (455 kg)	300 Lb. (136 kg)	6" to 28" (15 to 71 cm)	40" (102 cm)	265 Lb. (120 kg)
1-5154/20-A	1 Drum	Air Motor	20	1000 Lb. (455 kg)	300 Lb. (136 kg)	6" to 28" (15 to 71 cm)	40" (102 cm)	252 Lb. (115 kg)
1-5154/30-1	1 Drum	1/2 HP, 1-Phase, 115/230V, 60Hz	30	1000 Lb. (455 kg)	250 Lb. (114 kg)	6" to 28" (15 to 71 cm)	40" (102 cm)	296 Lb. (135 kg)
1-5154/30-1-50	1 Drum	1/2 HP, 1-Phase, 110/220V, 50Hz	24	1000 Lb. (455 kg)	250 Lb. (114 kg)	6" to 28" (15 to 71 cm)	40" (102 cm)	296 Lb. (135 kg)

Continued on page 3

* RPM is based on standard 22.5" diameter 55-gallon drum.

** A shifting dry load exerts greater stress on the drum roller than the fluid motion of a liquid load.

Install Morse Rotators in accordance with OSHA requirements for enclosure and interlock, etc. For OSHA compliance, see OSHA subpart O.1910.212(a)(4) "Barrels, containers, and drums. Revolving drums, barrels, and containers shall be guarded by an enclosure which is interlocked with the drive mechanism, so that the barrel, drum, or container cannot revolve unless the guard enclosure is in place."

Power connections and motor controls must comply with applicable codes.



The Specialist In Drum Handling Equipment

Single Stationary Drum Rollers

1-5154 Series

Drum Roller Model #	Roll	Motor	RPM *	Capacity Per Drum		Drum Diameter	Max. Drum Length	Ship Weight
				Liquid	Dry **			
1-5154/30-3	1 Drum	1/2 HP, 3-Phase, 230/460V, 60Hz	30	1000 Lb. (455 kg)	250 Lb. (114 kg)	6" to 28" (15 to 71 cm)	40" (102 cm)	296 Lb. (135 kg)
1-5154/30-3-50	1 Drum	1/2 HP, 3-Phase, 220/380/440V, 50Hz	24	1000 Lb. (455 kg)	250 Lb. (114 kg)	6" to 28" (15 to 71 cm)	40" (102 cm)	296 Lb. (135 kg)
1-5154/30-575	1 Drum	1/2 HP, 3-Phase, 56C, 575V, 60Hz	30	1000 Lb. (455 kg)	250 Lb. (114 kg)	6" to 28" (15 to 71 cm)	40" (102 cm)	296 Lb. (135 kg)
1-5154/30-E1	1 Drum	1/2 HP, Explosion-Proof, 1-Phase, 115/208-230V, 60Hz	30	1000 Lb. (455 kg)	250 Lb. (114 kg)	6" to 28" (15 to 71 cm)	40" (102 cm)	265 Lb. (120 kg)
1-5154/30-E1-50	1 Drum	1/2 HP, Explosion-Proof, 1-Phase, 110/220V 50Hz	24	1000 Lb. (455 kg)	250 Lb. (114 kg)	6" to 28" (15 to 71 cm)	40" (102 cm)	265 Lb. (120 kg)
1-5154/30-E3	1 Drum	1/2 HP, Explosion-Proof, 3-Phase, 208-230/460V, 60Hz	30	1000 Lb. (455 kg)	250 Lb. (114 kg)	6" to 28" (15 to 71 cm)	40" (102 cm)	265 Lb. (120 kg)
1-5154/30-E3-50	1 Drum	1/2 HP, Explosion-Proof, 3-Phase, 220/380/440V, 50Hz	24	1000 Lb. (455 kg)	250 Lb. (114 kg)	6" to 28" (15 to 71 cm)	40" (102 cm)	265 Lb. (120 kg)
1-5154/30-E575	1 Drum	1/2 HP, Explosion-Proof, 3-Phase, 56C, 575V, 60Hz	30	1000 Lb. (455 kg)	250 Lb. (114 kg)	6" to 28" (15 to 71 cm)	40" (102 cm)	265 Lb. (120 kg)
1-5154/30-A	1 Drum	Air Motor	30	1000 Lb. (455 kg)	250 Lb. (114 kg)	6" to 28" (15 to 71 cm)	40" (102 cm)	252 Lb. (115 kg)
1-5154VS-1-115	1 Drum	1/2 HP, 1-Phase, 115V, 50/60Hz	Variable 1 to 40	1000 Lb. (455 kg)	400 Lb. (182 kg) at 10 RPM, 200 Lb. (91 kg) at 40 RPM	6" to 28" (15 to 71 cm)	40" (102 cm)	370 Lb. (168 kg)
1-5154VS-1-230	1 Drum	1/2 HP, 1-Phase, 230V, 50/60Hz	Variable 1 to 40	1000 Lb. (455 kg)	400 Lb. (182 kg) at 10 RPM, 200 Lb. (91 kg) at 40 RPM	6" to 28" (15 to 71 cm)	40" (102 cm)	340 Lb. (168 kg)
1-5154VS-3-230	1 Drum	1/2 HP, 3-Phase, 230V, 50/60Hz	Variable 1 to 40	1000 Lb. (455 kg)	400 Lb. (182 kg) at 10 RPM, 200 Lb. (91 kg) at 40 RPM	6" to 28" (15 to 71 cm)	40" (102 cm)	340 Lb. (155 kg)
1-5154VS-3-460	1 Drum	1/2 HP, 3-Phase, 460V, 50/60Hz	Variable 1 to 40	1000 Lb. (455 kg)	400 Lb. (182 kg) at 10 RPM, 200 Lb. (91 kg) at 40 RPM	6" to 28" (15 to 71 cm)	40" (102 cm)	340 Lb. (155 kg)
1-5154VS-575	1 Drum	1/2 HP, 3-Phase, 56C 575V, 50/60Hz	Variable 1 to 40	1000 Lb. (455 kg)	400 Lb. (182 kg) at 10 RPM, 200 Lb. (91 kg) at 40 RPM	6" to 28" (15 to 71 cm)	40" (102 cm)	340 Lb. (155 kg)

MADE
IN
USA

* RPM is based on standard 22.5" diameter 55-gallon drum.

** A shifting dry load exerts greater stress on the drum roller than the fluid motion of a liquid load.

Install Morse Rotators in accordance with OSHA requirements for enclosure and interlock, etc. For OSHA compliance, see OSHA subpart O.1910.212(a)(4) "Barrels, containers, and drums. Revolving drums, barrels, and containers shall be guarded by an enclosure which is interlocked with the drive mechanism, so that the barrel, drum, or container cannot revolve unless the guard enclosure is in place."

Power connections and motor controls must comply with applicable codes.

Please contact your Morse dealer

MorseDrum.com

Copyright 2010 - Morse Mfg. Co., Inc. Spec Sheet F1-5154
(Updated March 15, 2012 8:42 AM)